

Oriana Jara Reference Center for Immigrants (CRAI)

The Oriana Jara Reference Center for Immigrants (CRAI) is a public service of São Paulo's Municipal Secretariat for Human Rights and Citizenship (SMDHC) managed by the Franciscan Solidarity Association. It has been providing assistance to the immigrant population since November 2014 through:

Promotion of immigrants' rights;

Social, cultural and economic inclusion of immigrants;

Engagement of stakeholders supporting immigrants in the city of São Paulo;

Training and education of public servants and other organizations.

The center provides assistance in **several languages, free of charge** and **open to all immigrants**, regardless of nationality or migratory status.

Services Offered



Documentation

Orientation on **migratory regularization**, Brazilian documentation, opening a bank account and translation of documents. Services offered by an all-immigrant team.



Institutional Networking and Training

Monitoring of networks, organizations and social movements in São Paulo and development of **partnerships, projects** and **socio-educational activities** on migration.



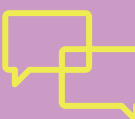
Social Services

Counselling and referral to public services such as **health care, education** and **social assistance**. Guidance on shelters and access to rights, policies and social benefits.



Legal Services

Free legal advice, including consultation and referral in cases of **rights violations**, with the support of the Public Defender's Office.



Mental Health

Free psychological care and development of activities in partnership with Veredas, a group from the University of São Paulo.

CRAI Projects

CRAI Mobile Unit



Mobile unit that can visit multiple areas in the city, providing the same services offered in our offices. To find out more about CRAI Mobile Unit's schedule, visit the link <http://bit.ly/craimovel> or scan the QR Code on the side.

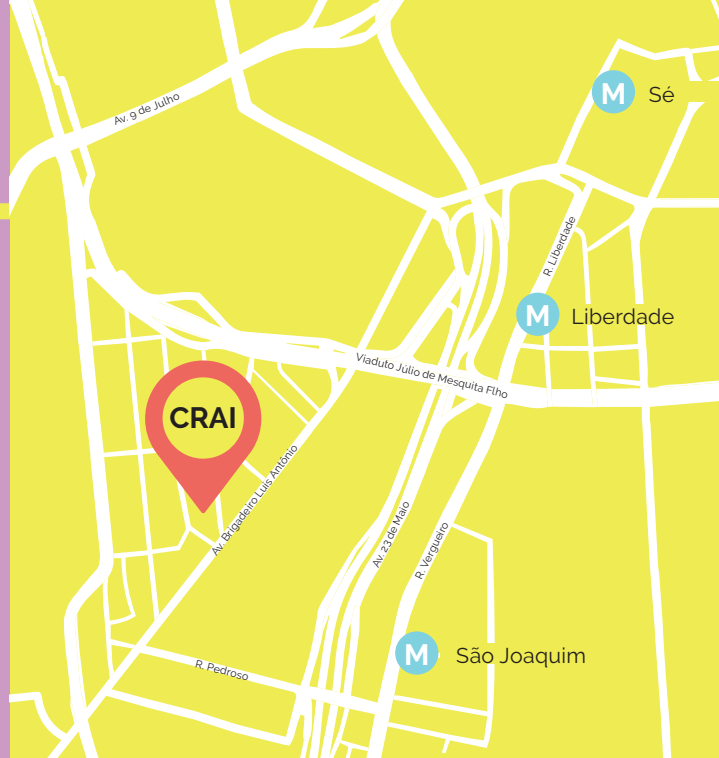


Open Doors - Portuguese for Immigrants

Free Portuguese course for immigrants offered by the City of São Paulo at local schools. For more information, visit the link: <https://bit.ly/portasabertasportuguesparamigrantes>.

CRAI Occupy

Monitoring of Occupations and their immigrant residents in the city of São Paulo.



Address

Rua Major Diogo, 834 - Bela Vista

(walking distance from São Joaquim station - 1 km)



Telephone

(11) 2361-5069 / (11) 2361-3780



Opening hours

Monday to Friday, 8am to 6pm



E-mail

crai@sefras.org.br



CRAI

ORIANA JARA